

**BEFORE THE ILLINOIS POLLUTION CONTROL BOARD**

JAS Farms, Inc. )  
(Property Identification Number ) PCB No. 22 -  
24-24-10-200-004 ) (Tax Certification)  
)

**NOTICE**

PLEASE TAKE NOTICE that I have today filed with the Office of the Clerk of the Pollution Control Board an APPEARANCE and RECOMMENDATION OF THE ILLINOIS ENVIRONMENTAL PROTECTION AGENCY, copies of which are herewith served upon you.

JAS Farms, Inc.  
33325 E. 1300 N. Road  
Chatsworth, Illinois 60921

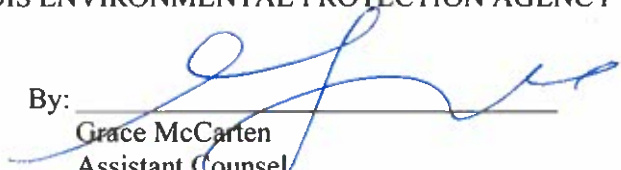
Don Brown, Clerk  
Illinois Pollution Control Board  
James R. Thompson Center  
100 West Randolph Street, Suite 11-500  
Chicago, Illinois 60601

**Copies also provided electronically as follows:**

Illinois Department of Revenue  
via email at REV.PropTaxApp@illinois.gov  
101 West Jefferson  
P.O. Box 19033  
Springfield, Illinois 62794

ILLINOIS ENVIRONMENTAL PROTECTION AGENCY

By: \_\_\_\_\_

  
Grace McCarten  
Assistant Counsel  
Division of Legal Counsel

DATED: July 13, 2023

Illinois Environmental Protection Agency  
1021 North Grand Avenue East  
Post Office Box 19276  
Springfield, Illinois 62794-9276  
(217) 782-5544

**THIS FILING IS SUBMITTED ON RECYCLED PAPER**


**BEFORE THE ILLINOIS POLLUTION CONTROL BOARD**

**JAS Farms, Inc.** )  
**(Property Identification Number** ) **PCB No. 22-**  
**24-24-10-200-004)** ) **(Tax Certification)**  
 )

**A P P E A R A N C E**

The undersigned, as one of its attorneys, hereby enters an **APPEARANCE** on behalf of Respondent, Illinois Environmental Protection Agency.

**ILLINOIS ENVIRONMENTAL PROTECTION AGENCY**

By:   
Grace McCarten  
Assistant Counsel  
Division of Legal Counsel

DATED: July 13, 2023

Illinois Environmental Protection Agency  
1021 North Grand Avenue East  
Post Office Box 19276  
Springfield, Illinois 62794-9276  
(217) 782-5544

**BEFORE THE ILLINOIS POLLUTION CONTROL BOARD**

JAS Farms, Inc. )  
(Property Identification Number ) PCB No. 22-  
08-08-13-300-008 ) (Tax Certification)  
)

**RECOMMENDATION OF THE ILLINOIS  
ENVIRONMENTAL PROTECTION AGENCY**

The Illinois Environmental Protection Agency ("Illinois EPA") hereby files its Recommendation pursuant to Section 125.204 of the regulations of the Illinois Pollution Control Board ("Board"), 35 Ill. Adm. Code 125.204.

1. On August 22, 2022, the Illinois EPA received a request from JAS Farms, Inc. (Log number TC-146761, Exhibit A) for an Illinois EPA recommendation regarding the tax certification of water pollution control facilities pursuant to 35 Ill. Adm. Code 125.204.
2. The facility's address is: JAS Farms, Inc.  
13619 N. 3400 E. Road  
Chatsworth, Illinois 60921

The proposed water pollution control facilities in this request are located in the NE ¼ of Section 10, T27N, R8E of the 3<sup>rd</sup> P.M. in Livingston County, at the above street address and consist of the following agrichemical containment structures:

One (1) concrete livestock waste pit measuring 201 ft. (length) x 101.83 ft. (width) x 8 ft. (depth) including columns, beams and center wall and the 6 concrete pump out pits measuring 6 ft. (length) x 6 ft. (width) x 8 ft. (depth) and approximately 680 linear feet of 4 inch diameter HDPE perimeter drain tile and approximately 20,000 sq. ft. of concrete slatted flooring over this manure pit.

These livestock waste management facilities are used to collect, transport and/or store livestock waste prior to cropland application.

3. Section 11-10 of the Property Tax Code, 35 ILCS 200/11-10 (2022), and Section 125.200(a) of the Board's regulations, 35 Ill. Adm. Code 125.200(a), define "pollution control facilities" as:

any system, method, construction, device or appliance appurtenant thereto or any portion of any building or equipment, that is designed, constructed, installed or operated for the primary purpose of: eliminating, preventing, or reducing air or water pollution ...or treating, pretreating, modifying or disposing of any potential solid, liquid or gaseous pollutant which if released without treatment, pretreatment modification or disposal might be harmful, detrimental or offensive to human, plant or animal life, or to property.

4. In order to receive preferential tax treatment as pursuant to 35 ILCS 200/11-5 (2022), pollution control facilities must be certified as such by the Board, 35 ILCS 200/11-20 (2022) and 35 Ill. Adm. Code 125.200(a).
5. Upon receipt of a tax certification application, the Illinois EPA must file a recommendation on the application with the Board, 35 Ill Adm. Code 125.204(a).
6. Based on the information in the application and the purpose of the facility, it is the Illinois EPA's engineering judgment that the described facilities may be considered "pollution control facilities," pursuant to 35 Ill. Adm. Code 125.200(a), with the primary purpose of eliminating, preventing, or reducing water pollution, or as otherwise provided in 35 Ill. Adm. Code 125.200, and are eligible for tax certification from the Board.

WHEREFORE, the Illinois EPA recommends that the Board issue the requested tax certification.

ILLINOIS ENVIRONMENTAL PROTECTION AGENCY

By: 

Grace McCarten  
Assistant Counsel  
Division of Legal Counsel

Dated: July 13, 2023

Illinois Environmental Protection Agency  
1021 North Grand Ave. E.  
P.O. Box 19276  
Springfield, Illinois 62794-9276  
(217) 782-5544



**ILLINOIS ENVIRONMENTAL PROTECTION AGENCY**

1021 NORTH GRAND AVENUE EAST, P.O. BOX 19276, SPRINGFIELD, ILLINOIS 62794-9276 • (217) 782-3397

JB PRITZKER, GOVERNOR

JOHN J. KIM, DIRECTOR

**Memorandum**

To: Mike Roubitchek, Division of Legal Counsel

From: Darin E. LeCrone, P.E., Manager, Permit Section, Division of Water Pollution Control, Illinois Environmental Protection Agency *DEL*

Date: DEC 29 2022

Re: JAS Farms, Inc. - Chatsworth  
Recommendation of Tax Certification  
Log No.: TC-146761  
BOW ID No.: W1058040004  
Property Index Number: 24-24-10-200-004

The Bureau of Water received a request on August 22, 2022 from JAS Farms, Inc., having a principal place of business at 33325 E. 1300 N. Rd., Chatsworth, IL 60921, for an Illinois EPA recommendation regarding the tax certification of water pollution control facilities pursuant to 35 Il. Adm. Code 125.204. We offer the following recommendation.

The water pollution control facilities in this request include the following:

JAS Farms, Inc.  
13619 N. 3400 E. Road  
Chatsworth, IL 60921

NE 1/4 of Section 10, Township 27-North, Range 8-East of the 3rd PM in Livingston County.

Livestock waste management facilities consisting of:

One (1) concrete livestock waste pit measuring 201 ft. (length) x 101.83 ft. (width) x 8 ft. (depth) including all associated columns, beams and center wall and the 6 concrete pump out pits measuring 6 ft. (length) x 6 ft. (width) x 8 ft. (depth) and approximately 680 linear feet of 4 inch diameter HDPE perimeter drain tile and approximately 20,000 sq. ft. of concrete slatted flooring over this manure pit.

These livestock waste management facilities are used to collect, transport and/or store livestock wastes prior to cropland application.

These facilities are further described in the enclosed applications and supporting documents.

Based on the information included in this submittal, it is our engineering judgment that the above proposed facilities may be considered "Pollution Control Facilities" under 35 IAC 125.200(a), with the primary purpose of eliminating, preventing, or reducing water pollution, or as otherwise provided in this section, and therefore eligible for tax certification from the Illinois Pollution Control Board. The Bureau of Water therefore recommends that the Board issue the requested tax certification for these facilities.

If you have any questions regarding the above, please contact Darren Gove at 217/782-0610.

2125 S. First Street, Champaign, IL 61820 (217) 278-5800  
2009 Mall Street Collinsville, IL 62234 (618) 346-5120  
9511 Harrison Street, Des Plaines, IL 60016 (847) 294-4000  
595 S. State Street, Elgin, IL 60123 (847) 608-3131

2309 W. Main Street, Suite 116, Marion, IL 62959 (618) 993-7200  
412 SW Washington Street, Suite D, Peoria, IL 61602 (309) 671-3022  
4302 N. Main Street, Rockford, IL 61103 (815) 987-7760

Electronic Filing: Received, Clerk's Office 07/13/2023 \*\*PCB 2024-002\*\*

Page No. 2

Tax Certification Recommendation

Log No. TC-146761

DRG:TC-146761\_Tax Cert Recommendation\_22Aug22.docx

cc: Tax Cert File

Illinois EPA - Bureau of Water - Division of Pollution Control

Title 35 Subtitle A Part 125 Tax Certifications

Illinois EPA Review Notes for:

**Agency Recommendation of Pollution Control Facilities.**

---

**BOW ID #:** W1058040004

**Project Name:** JAS Farms, Inc.

**Date application received:** 8/22/2022

**Reviewer:** DRG

**Log number:** TC-146761

**Legal Description:**

NE 1/4 of Section 10 Twp: 27-North Range: 8-  
East PM: 3rd

**County:** Livingston

**Facility Contact:** Attn Jacob Nims, 1032 S. 2nd  
Street, Springfield, IL 62704

**Phone:** 217-679-7361

**Pollution Control Facility Type:**

Swine Livestock Waste Management Facility

**Property ID:** 24-24-10-200-004

**Applicant:** JAS Farms, Inc.

33325 E. 1300 N. Rd.

Chatsworth, IL 60921

**Facility:** JAS Farms, Inc.

13619 N. 3400 E. Road

Chatsworth, IL 60921

**Date Control Devices installed:** 7/14/2022

**Application Signature by:** Casey Sterrenberg

**Title:** Choose an item. V.P.

Contents of Application: New app form with highlighted correction copy, Frank and West

Is there a pollutant control flow diagram? **Yes**

Is there sufficient diagrams showing the pollution control facilities? **Yes**

**This facility generates the following pollutants and prevents their discharge as indicated:**

Livestock waste is collected and land applied to cropland.

**Physical description of pollution control facilities that ARE recommended:**

Livestock waste management facilities consisting of:

One (1) concrete livestock waste pit measuring 201 ft. (length) x 101.83 ft. (width) x 8 ft. (depth) including all associated columns, beams and center wall and the 6 concrete pump out pits measuring 6 ft. (length) x 6 ft. (width) x 8 ft. (depth) and approximately 680 linear feet of 4 inch diameter HDPE perimeter drain tile and approximately 20,000 sq. ft. of concrete slatted flooring over this manure pit.

These livestock waste management facilities are used to collect, transport and/or store livestock wastes prior to cropland application.

**Notes:**

The site location address was not included on the form. Called Casey S. on 10/5/2022 to obtain. He provided the address as 13619 N. 3400 E. Road Chatsworth, IL 60921-



Illinois EPA Log #: TC-146761

Page 2 of 2

**Nothing follows – DRG - (October 5, 2022)**



# Illinois Environmental Protection Agency

BOW W1058040004

1021 North Grand Avenue East • P.O. Box 19276 • Springfield • Illinois • 62794-9276 • (217) 782-3362

**RECEIVED**  
AUG 22 2022

Division of Water Pollution Control

## Tax Certification Form for Livestock Operations

This form's purpose is for the application for tax certification of water pollution control facilities at a livestock operation in accordance with 35 Ill. Admin. Code Part 125. For purposes of this form, a water pollution control facility ("facility") is designed, constructed, installed or operated for the primary purpose of eliminating, preventing, or reducing water pollution. Multiple facilities may be submitted using this form; however, all facilities must be located on the same livestock operation site. Separate applications must be completed for separate livestock operations.

All other types of operations (e.g. industrial, agrichemical, etc.) and air pollution control facilities must use form IL 532-0222

Please follow the instructions found throughout this form. If you need additional assistance with filling out this form, please call the Bureau of Water at 217-782-3362. Additional information about the tax certification process and applicable regulations including definitions may be found at the Agency website: [www2.illinois.gov/epa/topics/forms/water-permits/tax-certification](http://www2.illinois.gov/epa/topics/forms/water-permits/tax-certification)

### I. Applicant Information

Company: JAS Farms, Inc.

#### Person Authorized to Receive Certification

#### Person to Contact for Additional Details

Name: Casey Sterrenberg

Name: Same

Street Addr: 33325 E. 1300 N. Rd.

Street Addr: \_\_\_\_\_

City: Chatsworth State: IL ZIP: 60921

City: \_\_\_\_\_ State: \_\_\_\_\_ ZIP: \_\_\_\_\_

Phone: 815-822-3013 ext: \_\_\_\_\_

Phone: \_\_\_\_\_ ext: \_\_\_\_\_

Email: caseysterrenberg@yahoo.com

Email: \_\_\_\_\_

### II. Livestock Operation Information

#### Site Location

The location of the parcel of land where the facilities are located and given by quarter section, township, range and county must be provided. The Public Land Survey System information is available on county plat maps or at [www.isgs.illinois.edu/plss](http://www.isgs.illinois.edu/plss)

Quarter Section: NE Township: 27N Range: 8E Prime Meridian: 3rd County: Livingston

Municipality Name: Section 10

Township Name: \_\_\_\_\_

Street Address: \_\_\_\_\_

City: \_\_\_\_\_ State: IL ZIP: \_\_\_\_\_

Property Index Number(s): \_\_\_\_\_ \*

Add PIN

Del. PIN

A property index number (PIN) for the parcel of land where pollution control facilities are located is required. If multiple PINs are applicable to the requested facilities, you must identify all applicable PINs in the above line and in Section III below. If you do not know your PIN you may obtain it from your records or your County's tax assessors website which may be found on the Illinois Department of Revenue website at [www2.illinois.gov/rev/Individuals/Pages/IllinoisCounties.aspx](http://www2.illinois.gov/rev/Individuals/Pages/IllinoisCounties.aspx)

**Livestock Activities:** Provide descriptions of the livestock operations including type of animals at the site. (Text box will expand.)

The structure is a swine finishing building where swine are housed on concrete slats with a below ground concrete pit used as waste storage.

**Pollutant Sources:** Identify potential sources of water pollution that are being controlled (i.e., beef feedlot runoff, swine manure, silage leachate, etc.). Provide estimated quantities of each pollutant that is produced in gallons per year. (Text box will expand.)

Approximately 950,000 gallons of swine manure will be stored in the concrete pit per year.

Are the pollutants collected by the facility land applied?  Yes  No

If No, provide a description of the final disposition of the pollutants which are collected by the facility.

[Empty text box for description of pollutant disposition]

**III. Pollution Control Facility Information**

Applicant must ensure each requested pollution control facility is represented accurately in both Part A and Part B of this Section.

**Part A. Operational Diagram**

Using the space provided below or on a separate sheet of paper, provide a plan sketch or map of the livestock operation scaled to show the location and layout of all the requested facilities. All requested facilities must be clearly identified on this diagram. Each facility should be labeled with the pollution control facility number identified in Part B of this Section and primary dimensions to help distinguish between other requested facilities. Please include labels of roadways, downstream waterways, other important landmarks and a north seeking arrow.

Check this box if the required diagram was completed on a separate sheet and attached to this application.

**Part B. Pollution Control Facility Data**

For each separate requested pollution control facility in this application, provide written or typed responses to all of the following questions. Use the button below the questions to add blank questions for each additional requested facility.

**Pollution Control Facility Number 1**

Name of pollution control facility: Finishing Building

Provide a physical description including all pertinent dimensions (length, width, depth, diameter), construction materials (e.g. steel, HDPE, concrete block, etc.), and rating (e.g. 10 HP centrifugal pump). (Text box will expand.)

A reinforced concrete pit with dimensions of 201' x 101'10" x 8' deep is used to store livestock waste until the appropriate time to apply the manure to agricultural fields at agronomic rates. The building has six (6) 6' x 6' x 8' deep pumpouts, 680' of 4" HDPE perimeter tile, and 20,000 ft<sup>2</sup> of precast concrete slats.

Is the requested facility used 100 percent for elimination, prevention, or reduction of water pollution?  Yes  No

If No, list all other uses of the facility and provide a use-percentage estimate for each of those other uses.

[Empty text box for other uses of the facility]

Original cost of the pollution control facility: \_\_\_\_\_ \*

Date of installation or status of installation: \_\_\_\_\_

Property Index Number (PIN): \_\_\_\_\_

Applicable Illinois EPA permit number(s): \_\_\_\_\_

Are supplemental diagrams or construction drawings for this pollution control facility attached to the application?  Yes  No

If Yes, please label the diagram with the specific pollution control facility number identified above.

Click "Add a Facility" to add another set of facility questions for each requested facility. A number will automatically be assigned to the additional facility. Please use this number when labeling facilities in the diagram required in Part A of this Section. Handwritten submittals must also include one set of questions per requested pollution control facility. Use the "Delete last Facility" button to remove excess questions.

Add a facility

Delete last facility

**IV. Discharge Point Locations and Receiving Waters**



# Illinois Environmental Protection Agency

1021 North Grand Avenue East • P.O. Box 19276 • Springfield • Illinois • 62794-9276 • (217) 782-3362

**RECEIVED**  
AUG 22 2022

Division of Water Pollution Control

## Tax Certification Form for Livestock Operations

This form's purpose is for the application for tax certification of water pollution control facilities at a livestock operation in accordance with 35 Ill. Admin. Code Part 125. For purposes of this form, a water pollution control facility (facility) is designed, constructed, installed or operated for the primary purpose of eliminating, preventing, or reducing water pollution. Multiple facilities may be submitted using this form; however, all facilities must be located on the same livestock operation site. Separate applications must be completed for separate livestock operations.

All other types of operations (e.g. industrial, agrichemical, etc.) and air pollution control facilities must use form IL 532-0222

Please follow the instructions found throughout this form. If you need additional assistance with filling out this form, please call the Bureau of Water at 217-782-3362. Additional information about the tax certification process and applicable regulations including definitions may be found at the Agency website: [www2.illinois.gov/epa/topics/forms/water-permits/tax-certification](http://www2.illinois.gov/epa/topics/forms/water-permits/tax-certification)

### I. Applicant Information

Company: \_\_\_\_\_

Person Authorized to Receive Certification			Person to Contact for Additional Details		
Name:	_____		Name:	_____	
Street Addr:	_____		Street Addr:	_____	
City:	State: _____	ZIP: _____	City:	State: _____	ZIP: _____
Phone:	_____	ext: _____	Phone:	_____	ext: _____
Email:	_____		Email:	_____	

### II. Livestock Operation Information

#### Site Location

The location of the parcel of land where the facilities are located and given by quarter section, township, range and county must be provided. The Public Land Survey System information is available on county plat maps or at [www.isgs.illinois.edu/plss](http://www.isgs.illinois.edu/plss)

Quarter Section: \_\_\_\_\_ Township: \_\_\_\_\_ Range: \_\_\_\_\_ Prime Meridian: \_\_\_\_\_ County: \_\_\_\_\_

Municipality Name: \_\_\_\_\_ Township Name: \_\_\_\_\_

Street Address: \_\_\_\_\_ City: \_\_\_\_\_ State: IL ZIP: \_\_\_\_\_

Property Index Number(s): 24-24-10-260-004

Add PIN	Del. PIN
---------	----------

A property index number (PIN) for the parcel of land where pollution control facilities are located is required. If multiple PINs are applicable to the requested facilities, you must identify all applicable PINs in the above line and in Section III below. If you do not know your PIN you may obtain it from your records or your County's tax assessors website which may be found on the Illinois Department of Revenue website at [www2.illinois.gov/rev/Individuals/Pages/IllinoisCounties.aspx](http://www2.illinois.gov/rev/Individuals/Pages/IllinoisCounties.aspx)

**Livestock Activities:** Provide descriptions of the livestock operations including type of animals at the site. (Text box will expand.)

**Pollutant Sources:** Identify potential sources of water pollution that are being controlled (i.e., beef feedlot runoff, swine manure, silage leachate, etc.). Provide estimated quantities of each pollutant that is produced in gallons per year. (Text box will expand.)

Are the pollutants collected by the facility land applied?

Yes  No

If No, provide a description of the final disposition of the pollutants which are collected by the facility.

**III. Pollution Control Facility Information**

Applicant must ensure each requested pollution control facility is represented accurately in both Part A and Part B of this Section.

**Part A. Operational Diagram**

Using the space provided below or on a separate sheet of paper, provide a plan sketch or map of the livestock operation scaled to show the location and layout of all the requested facilities. All requested facilities must be clearly identified on this diagram. Each facility should be labeled with the pollution control facility number identified in Part B of this Section and primary dimensions to help distinguish between other requested facilities. Please include labels of roadways, downstream waterways, other important landmarks and a north seeking arrow.

Check this box if the required diagram was completed on a separate sheet and attached to this application.

**Part B. Pollution Control Facility Data**

For each separate requested pollution control facility in this application, provide written or typed responses to all of the following questions. Use the button below the questions to add blank questions for each additional requested facility.

**Pollution Control Facility Number 1**

Name of pollution control facility: \_\_\_\_\_

Provide a physical description including all pertinent dimensions (length, width, depth, diameter), construction materials (e.g. steel, HDPE, concrete block, etc.), and rating (e.g. 10 HP centrifugal pump). (Text box will expand.)

Is the requested facility used 100 percent for elimination, prevention, or reduction of water pollution?  Yes  No

If No, list all other uses of the facility and provide a use-percentage estimate for each of those other uses.

Original cost of the pollution control facility: 373,080

Date of installation or status of installation: 07/14/2022

Property Index Number (PIN): 24-24-10-200-004

Applicable Illinois EPA permit number(s): LF10560001

Are supplemental diagrams or construction drawings for this pollution control facility attached to the application?  Yes  No

If Yes, please label the diagram with the specific pollution control facility number identified above.

Click "Add a Facility" to add another set of facility questions for each requested facility. A number will automatically be assigned to the additional facility. Please use this number when labeling facilities in the diagram required in Part A of this Section. Handwritten submittals must also include one set of questions per requested pollution control facility Use the "Delete last Facility" button to remove excess questions.

Add a facility

Delete last facility

**IV. Discharge Point Locations and Receiving Waters**

Provide a written description of the surface water drainage characteristics of the operation which may convey wastewater or polluted stormwater runoff from the facility to downstream waterways. Identify the location(s) on the property at which runoff or surface discharge leaves the property.

Surface water flows south and east away from the building site into a ditch.

Identify local ditches, streams, rivers, ponds or lakes that may receive wastewater or polluted stormwater runoff from the operation. Also identify any named waterways that are immediately downstream from the local waterway.

The North Fork of the Vermilion River flows 2,830' north of the building. An attached map shows the location of the building relative to the nearest stream.

**V. Approvals of Application and Signature**

*The information on this form and attachments is submitted in accordance with the Illinois Property Tax Code, as amended, and to the best of my knowledge is true and correct.*

**Any person who knowingly makes a false, fictitious, or fraudulent material statement, orally or in writing, to the Illinois EPA commits a Class 4 felony. A second or subsequent offense after conviction is a Class 3 felony. (415 ILCS 5/44(h))**

Printed Name	Title
Signature	Date

**VI. Submittal of Your Application**

**Completing this Form:** The absence of information requested in this form may result in denial of your application for tax certification. If information is omitted, Agency staff will determine when and if such information or data is essential and may contact you to obtain this information to complete its review. This application form may be completed and stored locally in electronic form for future printing. Electronic submittal or email submittal of this form is not authorized. If handwritten, the form must be legibly completed.

**Attachments:** Please only send attachments on 8.5" x 11" paper, do not send 11" x 17" sheets.

Please mail the completed and signed form and necessary attachments to:

Illinois Environmental Protection Agency  
Division of Water Pollution Control, Mail Code #15  
Attention: Permit Section  
1021 North Grand Avenue East  
P.O. Box 19276  
Springfield, Illinois 62794-9276

Provide a written description of the surface water drainage characteristics of the operation which may convey wastewater or polluted stormwater runoff from the facility to downstream waterways. Identify the location(s) on the property at which runoff or surface discharge leaves the property.

Identify local ditches, streams, rivers, ponds or lakes that may receive wastewater or polluted stormwater runoff from the operation. Also identify any named waterways that are immediately downstream from the local waterway.

**V. Approvals of Application and Signature**

The information on this form and attachments is submitted in accordance with the Illinois Property Tax Code, as amended, and to the best of my knowledge is true and correct.

Any person who knowingly makes a false, fictitious, or fraudulent material statement, orally or in writing, to the Illinois EPA commits a Class 4 felony. A second or subsequent offense after conviction is a Class 3 felony. (415 ILCS 5/44(h))

Casey Sterrenberg  
Printed Name

V.P.  
Title

Casey Sterrenberg  
Signature

8-19-22  
Date

**VI. Submittal of Your Application**

**Completing this Form:** The absence of information requested in this form may result in denial of your application for tax certification. If information is omitted, Agency staff will determine when and if such information or data is essential and may contact you to obtain this information to complete its review. This application form may be completed and stored locally in electronic form for future printing. Electronic submittal or email submittal of this form is not authorized. If handwritten, the form must be legibly completed.

**Attachments:** Please only send attachments on 8.5" x 11" paper, do not send 11" x 17" sheets.

Please mail the completed and signed form and necessary attachments to:

Illinois Environmental Protection Agency  
Division of Water Pollution Control, Mail Code #15  
Attention: Permit Section  
1021 North Grand Avenue East  
P.O. Box 19276  
Springfield, Illinois 62794-9276



**Frank & West**  
Environmental Engineers, Inc.

May 25, 2022

**RECEIVED**  
AUG 22 2022

IEPA  
BOWWPC/PERMIT SECTION

Illinois Environmental Protection Agency  
Division of Water Pollution Control, Mail Code #15  
Attention: Permit Section  
1021 North Grand Avenue East  
P.O. Box 19276  
Springfield, Illinois 62794-9276

RE: JAS Farms, Inc. facility

Frank & West is submitting an application for certification of property tax treatment for pollution control facility on behalf of the JAS Farms, Inc. facility.

If you have any further questions or comments regarding the JAS Farms, Inc. non-lagoon livestock waste handling facility, please advise.

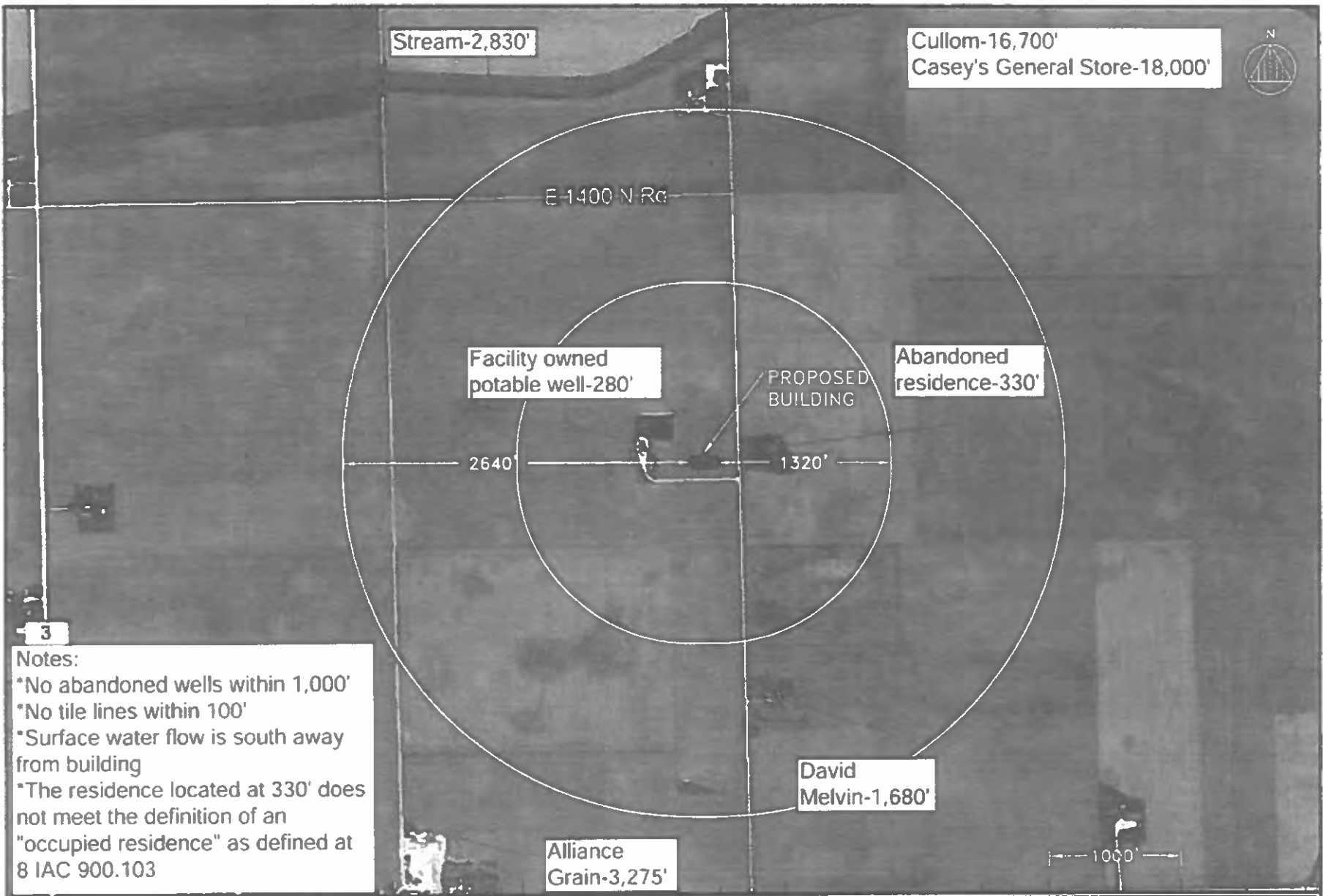
**FRANK & WEST**  
**ENVIRONMENTAL ENGINEERS, INC.**

A handwritten signature in black ink, appearing to read 'Jacob Nims', is written over the company name.

Jacob Nims  
Agricultural Engineer

Attachment: Application for Certification



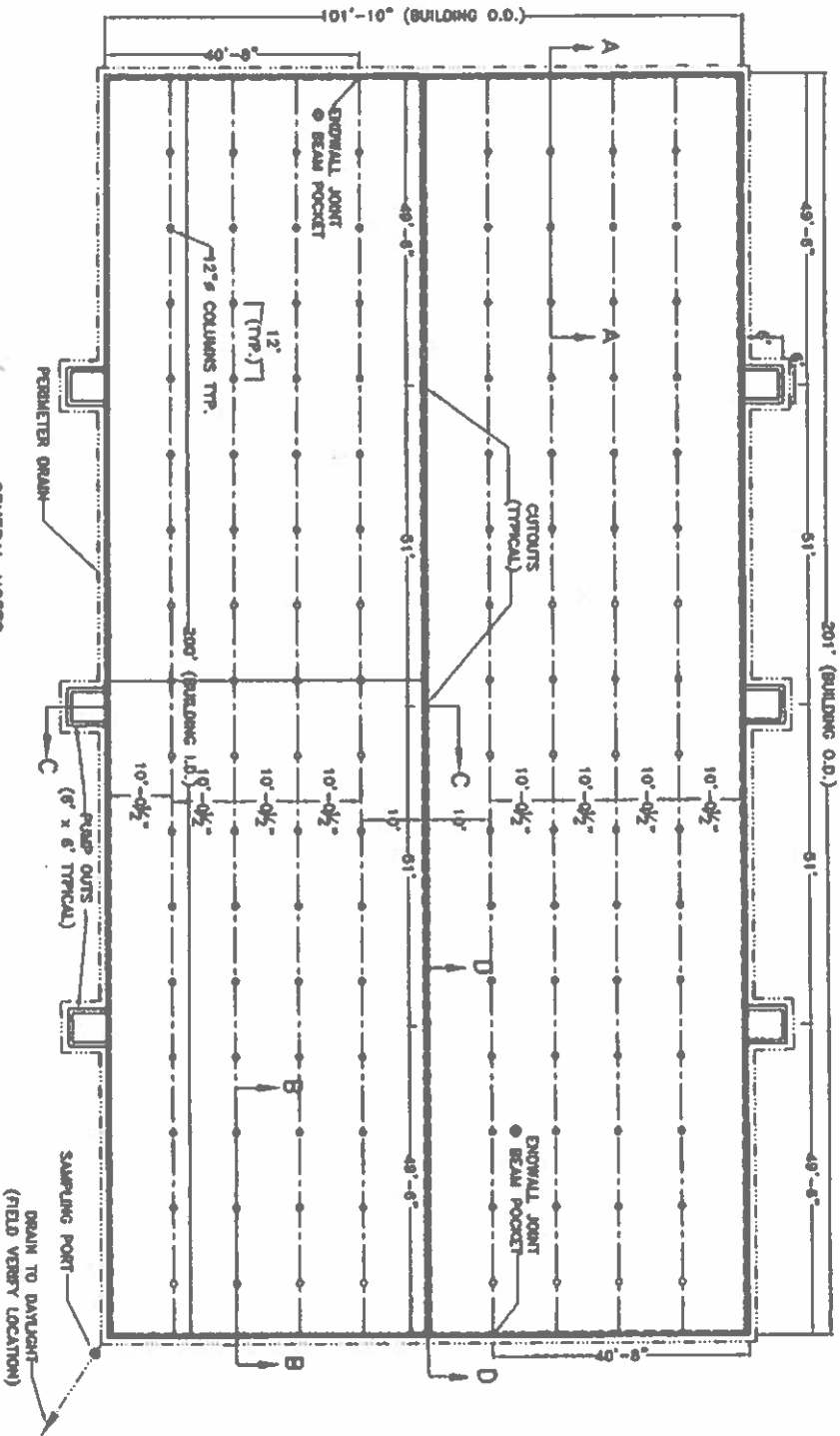


Notes:  
 \*No abandoned wells within 1,000'  
 \*No tile lines within 100'  
 \*Surface water flow is south away from building  
 \*The residence located at 330' does not meet the definition of an "occupied residence" as defined at 8 IAC 900.103

**Frank & West**  
 Environmental Engineers, Inc.  
 1032 S. 2nd Street  
 Springfield, IL 62704  
 Phone: 217/679-7361  
 Fax: 217/679-8362

**JAS Farms, Inc.**  
**SET BACK MAP**  
 DRAWN BY: CEO

2020 © FRANK & WEST ENVIRONMENTAL ENGINEERS, INC. THESE PLANS AND SPECIFICATIONS ARE THE PROPERTY OF FRANK AND WEST ENVIRONMENTAL ENGINEERS, INC. ARE ONLY FOR THIS PROJECT AND MAY NOT BE USED, COPIED OR DUPLICATED WITHOUT PRIOR WRITTEN CONSENT.  
 SCALE: AS SHOWN  
 DATE: 12/30/20  
 DRAWING NO. 20-16610



**GENERAL NOTES**

- 1.) ANY REVISIONS TO THESE DRAWINGS MUST BE APPROVED BY THE PROJECT ENGINEER OR THE COMPANY LISTED IN THE TITLE BLOCK.
- 2.) CONCRETE CONSTRUCTION SHALL MEET WITH MINIMUM PLUM SERVICE-14, CONCRETE FINISH STOVAGES UNLESS NOTED OTHERWISE.
- 3.) NO CONCRETE SHALL BE PLACED ON ICE SNOW OR FROZEN FOUNDATION MATERIAL. THE CONTRACTOR SHALL BE RESPONSIBLE FOR ALL CONCRETE DAMAGED BY LOW TEMPERATURES AND SHALL REMOVE AND REPLACE ANY CONCRETE SO DAMAGED AT HIS/HERS EXPENSE.
- 4.) THE METHOD AND NUMBER OF PLACING CONCRETE SHALL BE SUCH AS TO AVOID SEGREGATION OR SEPARATION OF THE AGGREGATE ON THE DISPLACEMENT OF THE REINFORCEMENT.
- 5.) THE PROGRESS ARE TO BE CONSTRUCTED WITH A MINIMUM OF 3,000 PSI CONCRETE.
- 6.) ALL WALLS, COLUMNS, AND FLOORS ARE TO BE CONSTRUCTED OF 4,000 PSI CONCRETE.
- 7.) CONCRETE SLATS WILL BE UTILIZED FOR FLOORING.
- 8.) THE CONCRETE PAD WILL BE A CONTINUOUS POUR.
- 9.) EXTERIOR WALL CONSTRUCTION JOINTS WILL BE INSTALLED AT 100' O.C. MAXIMUM, UNLESS OTHERWISE NOTED.
- 10.) NO VERTICAL LOADS ALLOWED WITHIN 5' OF RT/OUTER WALLS.
- 11.) ALL BEAMS SHALL BE BUTTED TIGHT AND/OR GROUTED TIGHT. THE FULL WIDTH AND HEIGHT OF THE BEAM, GROUT WILL HAVE A MINIMUM COMPRESSIVE STRENGTH OF 3,500 PSI.
- 12.) ALL SLATS SHALL BE BUTTED TIGHT AND/OR GROUTED TIGHT. THE FULL LENGTH AND DEPTH OF THE SLAT, GROUT WILL HAVE A MINIMUM COMPRESSIVE STRENGTH OF 3,500 PSI.
- 13.) NO PIPE PENETRATIONS OTHER THAN THE TYPES IDENTIFIED ON THESE DRAWINGS ARE ALLOWED. ALL WALL AND FLOOR PENETRATIONS, INCLUDING PIPE PENETRATIONS MUST BE APPROVED BY THE PROJECT ENGINEER.
- 14.) THE PRESUMED SOIL BEARING CAPACITY IS 2,000 LBS./SQ. FT., BASED ON MIRC'S CODE 313-3 TABLE 2.
- 15.) THE DESIGN OF THIS BUILDING IS BASED ON THE 2,000 LBS./SQ. FT. SOIL BEARING.
- 16.) WATERSTOP SHALL BE INSTALLED IN ACCORDANCE WITH MANUFACTURER'S INSTRUCTIONS.

**Frank & West**  
Environmental Engineers, Inc.

1022 S. End Street  
Springfield, IL 62704  
Phone: 217/670-7881  
Fax: 217/670-6382

**JAS FARMS INC**

**PLAN VIEW**

DRAWN BY: CEO

SCALE: AS SHOWN

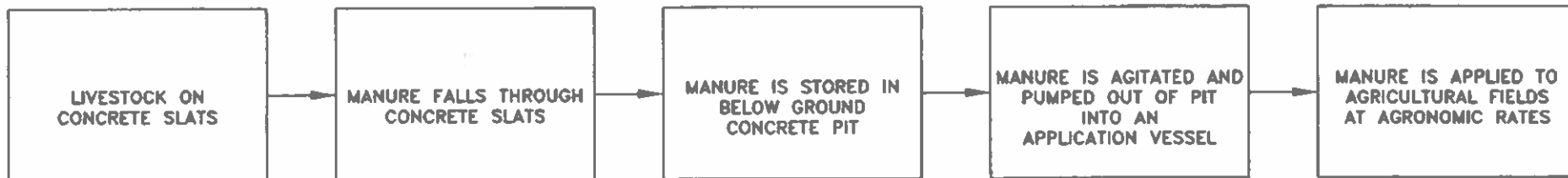
DATE: 03/01/21

REVISION ON: 03/30/21

DRAWING NO. 20-16601

2021 © FRANK & WEST ENVIRONMENTAL ENGINEERS, INC.  
THESE PLANS AND SPECIFICATIONS ARE THE PROPERTY OF  
FRANK AND WEST ENVIRONMENTAL ENGINEERS, INC. AND  
ONLY FOR THIS PROJECT AND MAY NOT BE USED, COPIED  
OR REPRODUCED WITHOUT WRITTEN CONSENT.

POLLUTION CONTROL FACILITY  
PROCESS FLOW DIAGRAM



STATE OF ILLINOIS

COUNTY OF SANGAMON

)  
)  
)  
)  
)

**CERTIFICATE OF SERVICE**

I, the undersigned attorney at law, hereby certify that I have served on the date of July 13, 2023, the attached **NOTICE**, **APPEARANCE** and **RECOMMENDATION OF THE ILLINOIS ENVIRONMENTAL PROTECTION AGENCY**, upon the following persons by causing to be mailed a true copy thereof in an envelope duly addressed, bearing proper first class postage, and deposited in the United States mail at Springfield, Illinois:

JAS Farms, Inc.  
33325 E. 1300 N. Road  
Chatsworth, Illinois 60921

**Copies also provided electronically as follows:**

Illinois Department of Revenue  
via email at REV.PropTaxApp@illinois.gov  
101 West Jefferson  
P.O. Box 19033  
Springfield, Illinois 62794

**[Electronic Filing]**

Clerk  
Illinois Pollution Control Board  
James R. Thompson Center  
100 West Randolph Street, Suite. 11-500  
Chicago, Illinois 60601

ILLINOIS ENVIRONMENTAL PROTECTION AGENCY

/s/ Grace McCarten  
Assistant Counsel  
Division of Legal Counsel  
1021 North Grand Avenue East  
P.O. Box 19276  
Springfield, Illinois 62794-9276  
(217) 782-5544  
(217) 782-9143 (TDD)